



# Matrix

(212) 787-7279  
P.O. Box 1410  
NY, NY 10023

Quality Antique Dolls by Mail  
Return Privilege • Layaways  
Member UFDC & NADDA

matrixbymail@gmail.com



1) **Pretty & Plump 15" Closed Mouth Kestner 'X'**  
- mint creamy bisque, Stiff Wrist Body w. charming  
Store Label, mohair wig & frilly party dress too! \$2200

2) **16" Very Rare & Adorable SFBJ '246' Character** - A fairy-like child, mld. tongue, oodles of honey ringlets, orig. Size '6' head & body in her Princess Gown. \$2495

3) **Glass Eye Pouty Heubach '8420' - 17" lad** in charming vintage sailor suit & shoes, faint hl under Factory Wig, only half price at \$895



4) **11.5" Haughty Cabinet Bru Fashion** - a Size '0' miniature gem w/ big personality in haute couture gown of silver grey multiple pleats, trims & train. \$1795

5) **17" Stately Gautier Poupée** - lovely swivel head, full upswept hair, great posture, so elegant in her old gartered stockings, her vintage silk & lace gown & matching Flowered Chapeau. \$1250

6) **A Romantic 17" Kestner Child Fashion** - poetic pre-1900 doll, haunting PW's, swivel hd, invis rear hl, square teeth, Factory Wig & Orig. Ensemble - hat to shoes. \$695

7) **27" French Trade '1000' Pre-1900 Child** - prized Mystery Maker for Au Nain Bleu! satin rich bisque, lustrous rimmed PW's, antique auburn wig & chunky jtd. Fr. Body. \$1250



8) **Scarce 19" Asian Mystery Model '164' - All Factory Original.** Amber Body, Mohair Wig & Kimono plus flawless quality amber tint bisque. So exotic! \$1650

9) **All Original & Mint 19" 'Mystery Mark' Simon Halbig** - in finest Clothes, Shoes, Wig & body, Ivory bisque features pre-1900 flat French Brows. A Halbig rarity. \$895



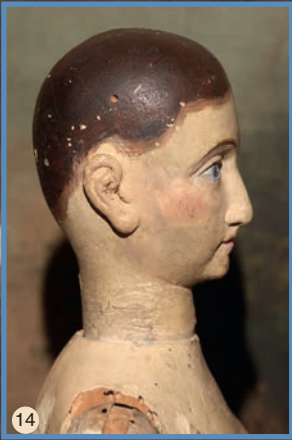
11) **20" Coy Jutta Toddler** - w those 2-tone Flirty Eyes & tin lids, sweet deep dimples, antique wig & clothes. \$595

12) **Very Rare & Unusual Open Mouth Bye-lo Type** - stunning quality, 2-tiny teeth, rare pierced nostrils, sgd. Bye-lo body & beautiful antique layers. \$1495

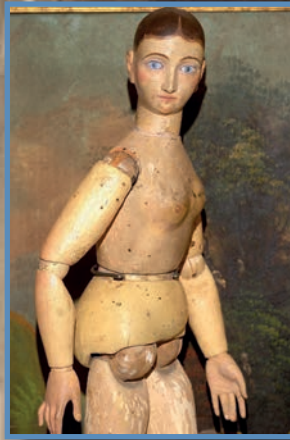
13) **28" Kestner '146' for FAO Schwarz** - early label on body! A total heirloom beauty from her mint wig to mint leather shoes. \$950



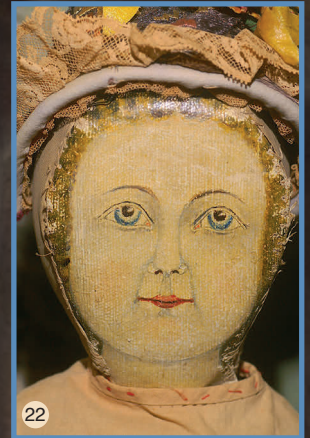
10) **Rare Goebel Smiling Character** - impish 16" pudgy toddler w bright smiling eyes, dimples, Factory Wig & period Clothes & Shoes. Tops! \$950



14) 24" Jointed Wooden w/Swivel Waist & Ankles! Important early Swivel Neck Lady, ball jtd. waist, molded breasts, lovely fingers! Masterpiece! \$4500



15) Rare 28" Philip Lerch Papier Mache - 1867 Philadelphia, orig. patina, rare patented blue convex eyes, orig fabric body, rear plate mend, great collector find! 1/2 the price only \$1250



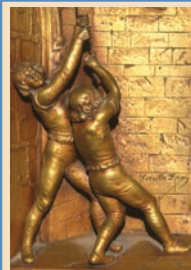
16) 7" Pink Face Charlie - quality doll, as-found, rare size \$125- 6" Early Jtd. Barefoot All Bisque ca: 1880 - mld Blue Bow in comb marked hair, long fingers, orig clothes. \$250

17) All Original 19" English 'Slit Head' Wax Twins ca.1830 - w. Wigs, Necklaces, Matching Delicate Gowns, blue Glass Eyes & pretty arms. Romantic phantoms! \$2750

18) Diminutive 11" Oil Painted Rag Baby ca.1910- uniquely pretty, extremely personable, bright colors & orig. clothes. \$450

19) 7.5" Poupée de Paludier Sisters w. Jtd. Wooden Bodies - ca 1850 France -such pretty faces, orig Headpieces, usual loss, unique & early Rare Twins! \$1495

20) 9" Carolina Folk Art Pipe Doll - flamboyant Crepe Paper Clothes fashioned around antique pipe w/ Painted Face. True Americana \$250



**Matrix**

(212) 787-7279  
P.O. Box 1410  
NY, NY 10023

matrixbymail@gmail.com

21) A Grand 34" Mint Greiner!- gorgeous orig paint/finish, All Original body, layers & boots, plus partial Label. None better! \$1495

22) Museum Class Oil Painted Doll - 25" hand painted 'Flat Face' icon of American art, excellent condition, fitted Leather Boots, the very doll in Coleman's Vol II. \$2800

23) Wooden Wheel Bassinet Pull Toy - activates French Mechanical Doll when pulled. All Original 11" long. \$295

24) Anatomically Correct Fabric Family - 10-22" tall; mint, Orig. Fancy Clothes & Shoes, Jewelry, individual stitched fingers & More! \$1250





25

25) Quaint Gottschalk with Gambrel Roof - front opening plus attic front access, Orig. paint & paper, glass windows. 15" x 13" x 8", excel paint! \$850



26

26) Rare little Gottschalk Cottage - just 11" x 11" x 7" deep! Two Room side accesses plus interior door, spacious 'flip top' attic access! \$895



26



27

27) Mint 10.5" S.H. 1078 - fully jtd incl hands w/ Factory Clothes-Wig-Hat & Shoes. A miniature \$550



28



29



28) Choice 10.5" Antoon K\*R 107 - flawless sgnd work with antique Body, Clothes, Wig. A choice cabinet Carl! \$425

29) Rare 7" Miniature K\*R 109 - Important All Orig gem from Factory Wig to Tiny Leather Shoes, a fully jtd 'Elise'! All mint and unplayed! \$4900

30) Factory Orig. 8" K\*R 'Starfish Toddlers' - terrific Festival Costumes from Hats to Leather Shoes, sl. eyes, bright colors & near mint! \$895



30



31



32

31) 1920's 16" Lenci '149/V' - Orig Deco Winter Ensemble, slews of tiny curls, feature photo in the Lenci Book. \$750

32) Factory MInt 17" Schoenhut Toddler w/Shoes - high shine, gorgeous complexion, silky mohair, unusual Factory Shoes. A winner! \$650

33) 14" Choice Artist Child - enchanted enameled eyes, full mohair tresses, gorgeous adolescent bisque limbs. \$275

34) 40" Rare Chase Youth - All so mint! Orig Short Suit w/ Label, jtd so he sits too! \$750



36



35

35) Scarce 'English Toy Company' Doll House - 'Tudor Lodge', 4-big rooms, open/closed tin windows, orig paint in & out! 24" x 29" x 13" deep. So pretty. \$425

36) Largest 20" Disney Pinocchio by Ideal - orig paint & Label, plus the Hat & Bow Tie! Rare & chunky. \$650



33



34

Matrix

(212) 787-7279  
P.O. Box 1410  
NY, NY 10023

Quality Antique Dolls by Mail  
Return Privilege • Layaways  
Member UFDC & NADDA  
matrixbymail@gmail.com

